

PRODUCT CATALOG



MIGHTYLUBE®

Systematic Lubrication, Inc.

WWW.MIGHTYLUBE.COM

CONVEYOR MAINTENANCE SOLUTIONS

- » Conveyor Chain Lubrication
- » Lubricants & Greases
- » Brush Cleaners
- » Conveyor Monitoring

TABLE OF CONTENTS

2 An Introduction to Mighty Lube® Equipment



4 CONVEYOR CHAIN LUBRICATION

- 4 Self-Contained Enclosed Track Conveyor Lubricators
- 5 Self-Contained I-Beam Conveyor Lubricators
- 6 Self-Contained Power and Free Conveyor Lubricators
- 7 Sealed Wheel Greaser
- 8 Central System Enclosed Track Conveyor Lubricators
- 9 Central System Inverted Square Tube Conveyor Lubricators
- 10 Central System I-Beam Conveyor Lubricators
- 11 Central System Inverted I-Beam Conveyor Lubricators
- 12 Central System Power and Free Conveyor Lubricators
- 13 Central System Free Carrier Lubricators
- 13 Caterpillar Drive Chain Lubricators
- 14 Central System In-Floor Conveyor Lubricators
- 15 Central System Pan and Scrap Conveyor Lubricators
- Central System Roller Chain Lubricators
- 16 Central System Pumping Reservoir
w/ D-Series Interface & Power Supply



17 CONVEYOR LUBRICANTS & GREASES

- 17 Thin Film Conveyor Lubricants
- 20 Higher Viscosity Conveyor Lubricants
- 21 Conveyor Greases



22 CONVEYOR BRUSH CLEANERS

- 22 I-Beam Conveyor Brush Cleaning Systems
- 23 Power and Non-Power Brush Cleaning Systems
- 24 Enclosed Track Conveyor Brush Cleaning Systems
- 25 Other Conveyor Brush Cleaning Systems



26 CONVEYOR MONITORING

- 26 Conveyor Monitoring System
- 30 Permanent / Multi Line Monitoring System
- 32 Portable Monitoring System
- 34 Single Line Monitoring System
- 36 Paint Marker for Monitoring System



MIGHTY LUBE®
Systematic Lubrication, Inc.

An Introduction to MIGHTY LUBE® EQUIPMENT

MIGHTY LUBE® has over thirty years of field engineering and service experience resulting in the most technically advanced and highest quality conveyor monitoring and lubrication systems available to the industry.

Mighty Lube® **microprocessor controls** and high quality lubricants assure many years of trouble free operation and the best protection against downtime of your conveyor systems. Mighty Lube® offers both Centralized Systems and Self-Contained Lubricators with models available for most types of conveyors.

With Mighty Lube® microprocessor controls, the lubricators can be set up and programmed to lubricate chain pins, open trolleys, caterpillar drives, and turn bearings. Easily programmed to apply the right amount of lubricant, these lubricators allow precise control, assuring proper lubrication while reducing product contamination. The E-Prom memory assures that the lubricator will retain the specified program even in the event of a power failure.

Mighty Lube® **Self-Contained Conveyor Lubricators** require only a 120VAC power source, no air pressure is needed. The units come pre-mounted on a modified rail section requiring minimal downtime for installation.

The installation of a Mighty Lube® **Central Reservoir Lubrication System** is recommended where multiple conveyors are in proximity to each other. Like the self contained units, the lubricating heads are pre-mounted for ease of installation. The central reservoir system is easily expandable, an important factor when considering future expansion.

Mighty Lube® also produces a complete line of **Conveyor Brush Cleaning Systems**. These high quality brush systems keep the rails and the chain in top condition, preventing build up and product contamination.

In 2016, Mighty Lube® launched the latest addition to the Mighty Lube® permanent monitoring system, our **Next Generation Conveyor Monitoring System**. This conveyor monitoring unit continues to offer many of the features that were fine-tuned over the years. It incorporates several additional options which include: dog space monitoring, lubrication cycle monitoring and expanded chain wear analysis. We also made other improvements in the hardware technology, which allows for more precise, accurate readings. Next Generation conveyor chain wear monitoring is available for most standard conveyor types.

Mighty Lube® takes great pride in our monitoring system and will continue to advance, utilizing the latest technology available to provide our customers with the solutions they require.

The family of Mighty Lube® monitoring systems would not be complete without mentioning the latest two additions. Our **single line and portable conveyor monitoring systems** are the best in the industry. While both systems have been available for several years, it wasn't until recently that we completed a redesign to add more features that our customers prefer.

The portable system now provides both link by link and 10-foot data, is lightweight, and battery powered. It also includes a Windows tablet for ease in downloading the data, as well as customized software. While the portable system is great for shops with multiple conveyor lines, the single line system is designed for smaller customers with only one or two critical lines. This system is stationary and provides the chain wear data for a single conveyor when downloaded onto the tablet or connected to a designated computer.

The Conveyor Monitoring and Lubrication System is available for all standard conveyor systems!

PATENT INFORMATION

MIGHTY LUBE® Equipment patents:

US Patent No 4,212,372
Monorail I-Beam Modification

US Patent No 1,503,203
Self Contained Lubrication Apparatus

US Patent No 4,537,285
Conveyor Lubricating Apparatus

US Patent No 4,844,203
Self Contained Conveyor Lubricating Apparatus

US Patent No 5,563,392
Canada Patent No 2,173,656
Method And Apparatus For Monitoring Wear Of A Continuous Chain.



2100L Series Self-Contained Enclosed Track Conveyor Lubricators



Front View



Back View

MODEL #2100L

For Richards-Wilcox Overhead Conveyors

Lubricates Chain Pivots, Open Horizontal Bearings and Vertical Bearings.

MODEL #2101L

For Unibilt or Rapid Overhead Conveyors

Lubricates Chain Pivots, Open Horizontal Bearings and Vertical Bearings.

MODEL #2102L

For Double Vertical Bearing Chain Conveyors

Lubricates Chain Pivots, Open Horizontal Bearings and Single and Double Vertical Bearings.

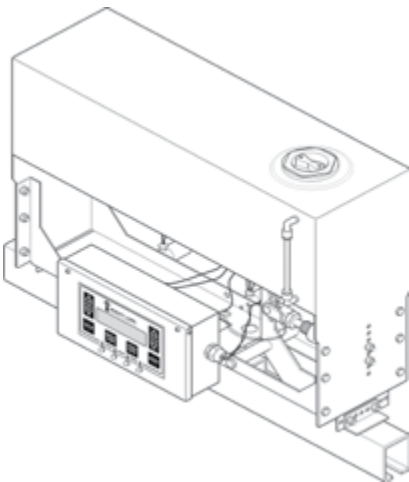
MODEL #2110L

For Round Tube Overhead Conveyors

Lubricates Chain Pivots, Open Horizontal Bearings and Vertical Bearings.

**Customer must supply a 30" rail section for pre-mounting.*

**Additional models available. Please contact us for details.*



NOTE

- » Fully programmable user interface
- » Self-Contained Units require a 120VAC power source
- » Includes built-in power supply and reservoir
- » Lubricant Capacity: 5.5 gallons with low level alarm
- » Units are pre-mounted on modified rail sections unless noted



2100L Series Self-Contained I-Beam Conveyor Lubricators



Front View



Back View

MODEL #2103L For Three Inch I-Beam Overhead Conveyors

Lubricates Chain Pins and Open Trolley Bearings.

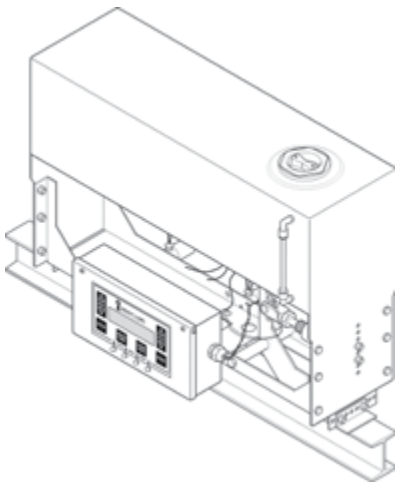
MODEL #2104L For Four Inch I-Beam Overhead Conveyors

Lubricates Chain Pins and Open Trolley Bearings.

MODEL #2106L For Six Inch I-Beam Overhead Conveyors

Lubricates Chain Pins and Open Trolley Bearings.

**Additional models available. Please contact us for details.*

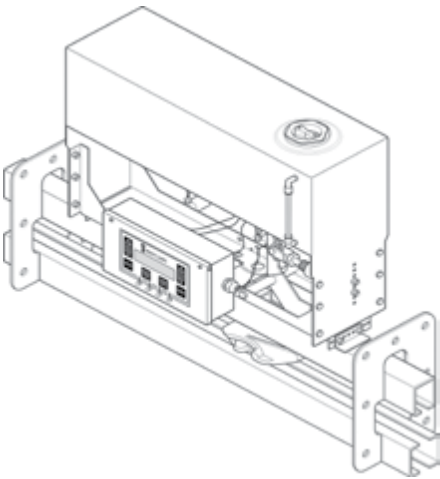


NOTE

- » Fully programmable user interface
- » Self-Contained Units require a 120VAC power source
- » Includes built-in power supply and reservoir
- » Lubricant Capacity: 5.5 gallons with low level alarm
- » Units are pre-mounted on modified rail sections unless noted



2100L Series Self-Contained Power and Free Conveyor Lubricators



MODEL #2105L

For Richards-Wilcox Overhead Conveyors

Lubricates Chain Pivots, Open Horizontal and Vertical Bearings on Power Chain; Open Load Bearings and Guide Rollers on the Free Carrier.

MODEL #2107L

For Unibilt or Rapid Overhead Conveyors

Lubricates Chain Pivots, Open Horizontal Bearings, and Single and Double Vertical Bearings on the Power Chain; Open Load Bearings and Guide Rollers on the Free Carrier.

MODEL #2108L

For Three Inch I-Beam Overhead Conveyors

Lubricates Chain Pins and Open Trolley Bearings on Power Chain; Open Load Bearings and Guide Rollers on the Free Carrier.

MODEL #2109L

For Four Inch I-Beam Overhead Conveyors

Lubricates Chain Pins and Open Trolley Bearings on the Power Chain; Open Load Bearings and Guide Rollers on the Free Carrier.

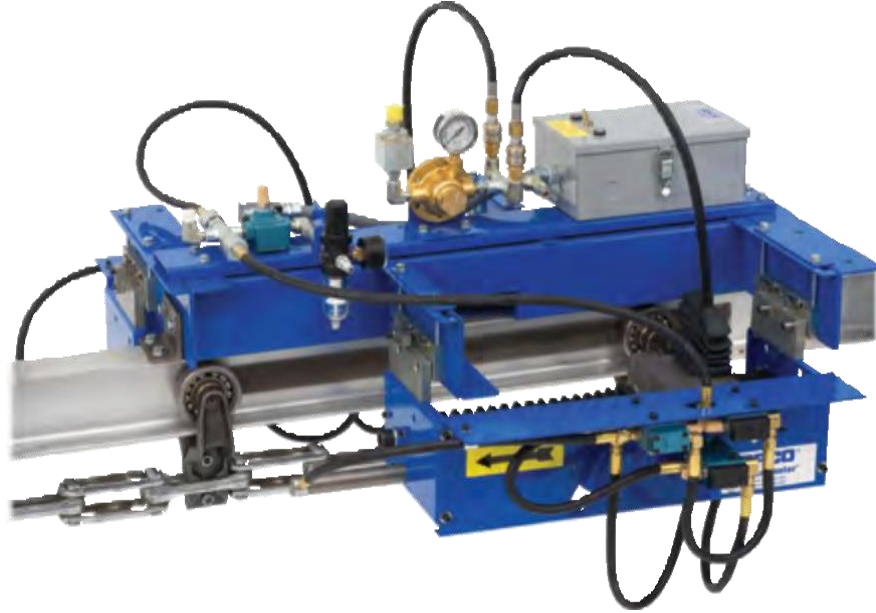
**Specialty conveyor or pivot point lubrication available by request. Please contact us for additional details and applications.*

NOTE

- » Fully programmable user interface
- » Self-Contained Units require a 120VAC power source
- » Includes built-in power supply and reservoir
- » Lubricant Capacity: 5.5 gallons with low level alarm
- » Customer must supply a rail section with at least 30" between the yokes for pre-mounting on all above models



Sealed Wheel Greaser OP-201 Conveyor Sealed Power Trolley Wheel Greaser



REDUCES
DOWNTIME

Greases sealed power trolley wheels while the conveyor is running under normal conditions.

ELIMINATES
SURGING

Reduces downtime and manual labor operations in lubrication conveyor sealed power trolley wheels.

LESS WASTE

Eliminates surging caused by un-greased and worn wheels, so product can be space closer, increasing productivity.

Conveyor runs smoother, keeps product from swaying, reducing possibility of injuring on the line.

Less waste, A metered amount of grease is cleanly and precisely injected into wheel.

Works on overhead and inverted conveyors.

NOTE

» OTHER SPECIALTY GREASERS CAN BE MANUFACTURED



9100L Series Central System Enclosed Track Conveyor Lubricators



Front View

MODEL #9100L

For Richards-Wilcox Overhead Conveyors

Lubricates Chain Pivots, Open Horizontal Bearings and Vertical Bearings.

MODEL #9101L

For Unibilt or Rapid Overhead Conveyors

Lubricates Chain Pivots, Open Horizontal Bearings and Vertical Bearings.

MODEL #9102L

For Double Vertical Bearing Chain Conveyors

*Lubricates Chain Pivots, Open Horizontal Bearings
and Single and Double Vertical Bearings.*

MODEL #9110L

For Round Tube Overhead Conveyors

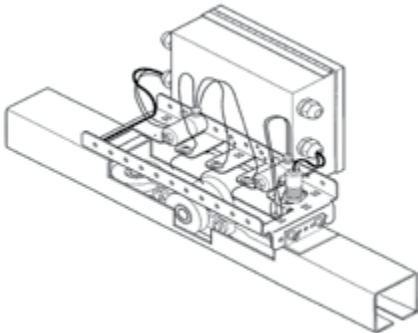
*Lubricates Chain Pivots, Open Horizontal Bearings
and Vertical Bearings.*

**Customer must supply a 24" rail section for pre-mounting.*

**Additional models available. Please contact us for details.*



Back View



NOTE

- » Fully programmable user interface
 - » Requires the use of a Central Pumping Reservoir and Power Supply
 - » Units are pre-mounted on modified rail sections unless noted
-



9100L Series Central System Inverted Square Tube Conveyor Lubricators

MODEL #9100INVL

Inverted Square Tube For Richards-Wilcox Conveyors

*Lubricates Chain Pivots, Open Horizontal
and Vertical Bearings.*

MODEL #9101INVL

Inverted Square Tube For Unibilt and Rapid Conveyors

*Lubricates Chain Pivots, Open Horizontal
and Vertical Bearings.*

MODEL #9102INVL

Inverted Square Tube For Unibilt Power Rail

*Lubricates Chain Pivots, Open Horizontal Bearings,
Single and Double Vertical Bearings.*



9102INVL - Front View

MODEL #9105INVL

Inverted Square Tube Power Chain and Free Carrier For Richards-Wilcox Conveyors

*Lubricates Chain Pivots, Open Horizontal Bearings,
Single and Double Vertical Bearings on the Power
Chain; Guide Rollers and Open Load Bearings
on the Free Carrier.*

**Customer must supply a 30" rail section
for pre-mounting.*

MODEL #9107INVL

Inverted Square Tube Power Chain and Free Carrier For Unibilt and Rapid Conveyors

*Lubricates Chain Pivots, Open Horizontal Bearings,
Single and Double Vertical Bearings on the Power
Chain; Guide Rollers and Open Load Bearings
on the Free Carrier.*

**Customer must supply a 30" rail section
for pre-mounting.*

** Specialty conveyor or pivot point lubrication
available by request. Please contact us for
additional details and applications.*

NOTE

- » Fully programmable user interface
- » Requires the use of a Central Pumping Reservoir and Power Supply
- » Units are pre-mounted on modified rail sections unless noted



9100L Series Central System I-Beam Conveyor Lubricators



Front View

MODEL #9103L For Three Inch I-Beam Overhead Conveyors with x348 Chain

Lubricates Chain Pins and Open Trolley Bearings.

MODEL #9104-4L For Four Inch I-Beam Overhead Conveyors with x458 Chain

Lubricates Chain Pins and Open Trolley Bearings.

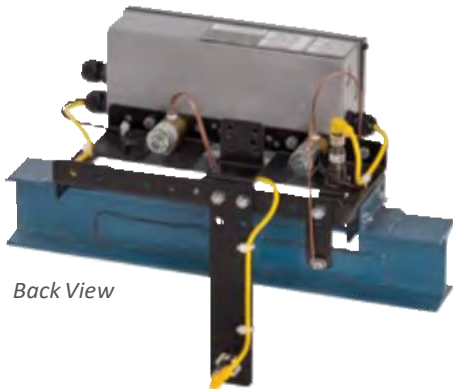
MODEL #9104-6L For Four Inch I-Beam Overhead Conveyors with x658 Chain

Lubricates Chain Pins and Open Trolley Bearings.

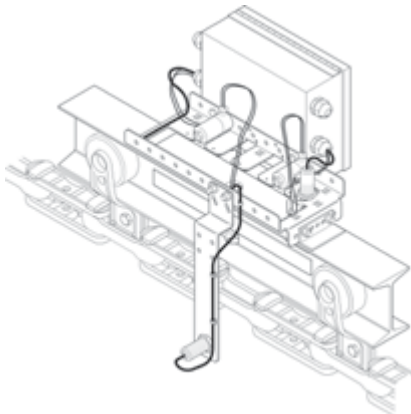
MODEL #9106-6L For Six Inch I-Beam Overhead Conveyors with x678 Chain

Lubricates Chain Pins and Open Trolley Bearings.

**Specialty conveyor or pivot point lubrication available by request.
Please contact us for additional details and applications.*



Back View



NOTE

- » Fully programmable user interface
- » Requires the use of a Central Pumping Reservoir and Power Supply
- » Units are pre-mounted on modified rail sections unless noted



9100L Series Central System Inverted I-Beam Conveyor Lubricators

MODEL #9103-3INVL For Three Inch Inverted I-Beam Conveyors with x348 Chain

*Lubricates Open Trolley Bearings and Chain Pins.
For Large Track Inverted Conveyors.*

**Customer must supply a 30" rail section
for pre-mounting.*

MODEL #9104-6INVL For Four Inch Inverted I-Beam Conveyors with x678 Chain

*Lubricates Open Trolley Bearings and Chain Pins.
For Large Track Inverted Conveyors.*

**Customer must supply a 30" rail section
for pre-mounting.*

MODEL #9104-4INVL For Four Inch Inverted I-Beam Conveyors with x458 Chain

*Lubricates Open Trolley Bearings and Chain Pins.
For Large Track Inverted Conveyors.*

**Customer must supply a 30" rail section
for pre-mounting.*

MODEL #9106-6INVL For Six Inch Inverted I-Beam Conveyors with x678 Chain

*Lubricates Open Trolley Bearings and Chain Pins.
For Large Track Inverted Conveyors.*

**Customer must supply a 30" rail section
for pre-mounting.*

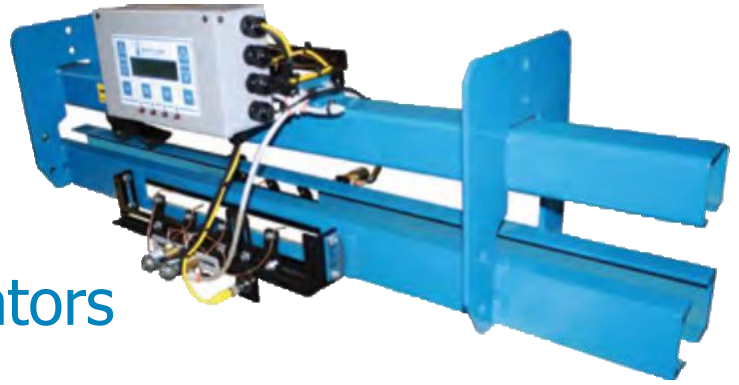
**Specialty conveyor or pivot point lubrication available by request.
Please contact us for additional details and applications.*

NOTE

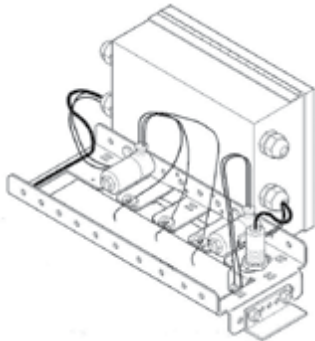
- » Fully programmable user interface
 - » Requires the use of a Central Pumping Reservoir and Power Supply
 - » Units are pre-mounted on modified rail sections unless noted
-



9100L Series Central System Power and Free Conveyor Lubricators



9007L - Front View



MODEL #9105L

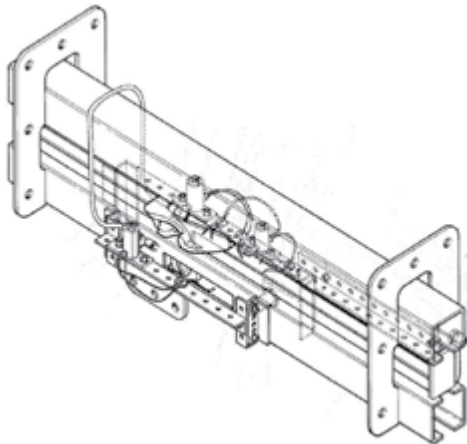
For Richards-Wilcox Overhead Conveyors

Lubricates Chain Pivots and Open Horizontal and Vertical Bearings on Power Chain; Open Load Bearings and Guide Rollers on the Free Carrier.

MODEL #9107L

For Unibilt or Rapid Overhead Conveyors

Lubricates Chain Pivots, Open Horizontal Bearings, and Single and Double Vertical Bearings on the Power Chain; Open Load Bearings and Guide Rollers on the Free Carrier.



MODEL #9108L

For Three Inch I-Beam Overhead Conveyors

Lubricates Chain Pins and Open Trolley Bearings on the Power Chain; Open Load Bearings and Guide Rollers on the Free Carrier.

MODEL #9109L

For Four Inch I-Beam Overhead Conveyors

Lubricates Chain Pins and Open Trolley Bearings on the Power Chain; Open Load Bearings and Guide Rollers on the Free Carrier.

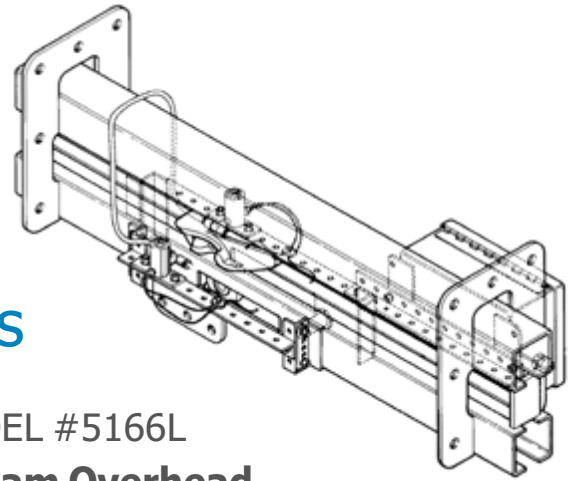
**Specialty conveyor or pivot point lubrication available by request. Please contact us for additional details and applications.*

NOTE

- » Fully programmable user interface
- » Requires the use of a Central Pumping Reservoir and Power Supply
- » Customer must supply a rail section with at least 30" between the yokes for pre-mounting on all above models



9100L Series Central System Free Carrier Conveyor Lubricators



MODEL #8149L

Enclosed Track Overhead Free Carrier Lubricator

*Lubricates Open Load Bearings
and Guide Rollers.*

MODEL #5166L

I-Beam Overhead Free Carrier Lubricator Load

*Lubricates Open Bearings, Guide Rollers,
Beaver Tail and Pop-Up Pusher Dog.*

MODEL #5162L

I-Beam Overhead Free Carrier Lubricator

*Lubricates Open Load Bearings
and Guide Rollers.*

MODEL #8167L

Inverted Free Carrier

*Lubricates Open Load Bearings
and Guide Rollers.*

**Customer must supply a 30" rail section
for pre-mounting.*

NOTE

- » Requires the use of a Central Pumping Reservoir and Power Supply
- » Customer must supply a rail section with at least 30" between the yokes for pre-mounting on all above models



Caterpillar DriveLubricators

Mounted at the conveyor drives; these units are a recommended addition to the conveyor lubrication system.

MODEL #9125

Caterpillar Drive Chain Lubricator

*Lubricates Caterpillar Drive Chain and Dog.
Operated by Controller on the Conveyor
Lubricator.*

MODEL #9126

Auxiliary Cat Drive Chain Lubricator

*Lubricates Auxiliary Caterpillar Drive Chain
and Dog. Operated by Controller on the
Conveyor Lubricator.*



9100L Series Special Purpose Conveyor Lubricators

MODEL #1122L

In-Floor Roller Flight Conveyor Lubricator

*Lubricator is mounted on the conveyor frame above the return chains.
Lubricates chain pins and open bearings.*

MODEL #1126L

In-Floor Rider Plate Conveyor Lubricator

*Lubricator is mounted over cutouts on the side of the conveyor channel.
Lubricates chain pins and rider plates.*

MODEL #1128L

In-Floor Drag Chain Conveyor Lubricator

*Lubricator is mounted over cutouts on the side of the conveyor channel.
Lubricates chain pins.*

MODEL #1130L

In-Floor Flat Top Conveyor Lubricator

*Lubricator is mounted on the conveyor frame above the return chains.
Lubricates chain pins and open bearings.*

MODEL #1130-1L

In-Floor Dual Chain Flat Top Conveyor Lubricator

*Lubricator is mounted on the conveyor frame above the return chains.
Lubricates chain pins and open bearings.*

NOTE

- » Requires the use of a Central Pumping Reservoir and Power Supply
 - » Customer must provide at least a 30" rail section for all above models
-



9100L Series Special Purpose Conveyor Lubricators

MODEL #2131L

Pan/Scrap Conveyor Lubricator

Lubricator is mounted on the conveyor frame above the return chains.

Lubricates chain pins and bearings.

MODEL #2133L

Pan/Scrap Conveyor and Hinge Lubricator

Lubricator mounted on the frame above the return chains.

Lubricates chain pins, open bearings, and hinge pivots.

MODEL #9829L

Roller Chain Lubricator

Lubricates chain swivels.

NOTE

- » Requires the use of a Central Pumping Reservoir and Power Supply
 - » Customer must provide at least a 30" rail section for all above models
-



7100D Series

Central Pumping Reservoir with D-Series Interface & Power Supply

MODEL
#7110D



MODEL #7110D

Central Pumping Reservoir w/ D-Series Interface & Power Supply

Ten Gallon Capacity.

MODEL #7165D

Central Pumping Reservoir w/ D-Series Interface & Power Supply

Sixty-five Gallon Capacity.

MODEL
#7165D



FEATURES INCLUDE:

- » Provides control voltage, communication and lubricant to remote lubricators
- » Automatic shut-down upon severed lubricant supply line
- » Auto-start control operates the pump only when lubricant is required at the lubricator heads
- » Pump shuts down at the end of the lubrication cycle
- » Low level alarm and shutdown
- » Observe all conveyor inputs and visual lubricant data
- » Track reservoir lubricant usage
- » Access to change IP address of power supply
- » View locally connected conveyors
- » Visualize reservoir lubricant levels
- » Change lubricator setting at the reservoir
- » Full duplex 100 mbs Ethernet technology
- » 120VAC or 230VAC 1ph options available



Thin Film Conveyor Lubricants

TYPE ML

Available in:
5 Gallon Pails and 55 Gallon Drums
Base: MoS² / Ester
Temperature Range: -65°F~500°F

- *General Purpose, Anti-Wear and Thin-Film Lubricant*
- *Base lubricants and anti-oxidants are suspended in a penetrating solvent which acts as both a cleaner and a carrier.*
- *Solvent evaporates, leaving behind a thin film of the highest quality MoS², rust inhibitors, and ester fluids*

TYPE MX

Available in:
5 Gallon Pails and 55 Gallon Drums
Base: MoS² / Ester
Temperature Range: -55°F~500°F

- *General Purpose, Anti-Wear, and Thin-Film Lubricant*
- *Solvent carrier agent acts as a cleaner, penetrator and carrier providing a pathway for the synthetic fluids and MoS² to reach the wear points*
- *Higher flash point provides a slightly more stable, longer lasting lubricant*

TYPE MX-HT

Available in:
5 Gallon Pails and 55 Gallon Drums
Base: Colloidal Graphite / Ester
Temperature Range: 450°F~1200°F

- *General Purpose, Anti-Wear, and Thin-Film Lubricant*
- *Solvent carriers penetrate and evaporate leaving the base behind, essentially providing a semi-fluid lubricant*
- *Graphite provides excellent high heat capability*

TYPE CSM-2

Available in:
5 Gallon Pails and 55 Gallon Drums
Base: Colloidal Graphite/Ester
Temperature Range: 450°F~1200°F

- *Heavy Duty, Anti-Wear, and Thin-Film Lubricant*
- *Solvent carrier agent acts as a cleaner, penetrator and carrier providing a pathway to reach wear points*
- *Can stand up to pressures in excess of 100,000PSI*
- *Higher flash point means slower evaporation allowing penetration to wear points at higher temperatures*

NOTE

The selection of a proper lubricant depends upon many factors, including: heat, moisture, and pressure. If you need help selecting a lubricant for your specific application, feel free to talk to one of our technicians at 231-924-6160.



Thin Film Conveyor Lubricants

TYPE CCL

Available in:

5 Gallon Pails and 55 Gallon Drums

Base: Synthetic Ester

Temperature Range: -65°F~575°F

- *Heavy Duty– Clean, Clear Lubricant*
- *Slight citrus aroma*
- *Cleaner; breaks down inferior lubricants*
- *Lasts up to twice as long as other lubricants*
- *Does not cause build up on conveyor lines*
- *Withstands extreme conveyor applications*
- *Ashless lubricant that will not build up or varnish*

TYPE SS3

Available in:

5 Gallon Pails and 55 Gallon Drums

Base: Ester / Synthetic MoS²

Temperature Range: up to 450°F

- *Clean lubricant with excellent EP properties*
- *High lubricity*
- *Water dispersion qualities make it ideal on wash lines and other locations where moisture can be a problem*

TYPE LDM

Available in:

5 Gallon Pails and 55 Gallon Drums

Base: Synthetic Ester / MoS²

Temperature Range: -55°F~550°F

- *Heavy duty, anti wear lubricant,*
- *Ashless lubricant that will not build up or varnish*
- *Withstands extreme industrial conveyor applications*
- *Reduces and removes particles left from inferior lubricants and oils*
- *Holds up extremely well at high temperatures*
- *Excellent around moisture or wash lines*
- *Cuts lubricant consumption*
- *High flash point*
- *Lasts up to twice as long as other lubricants*

NOTE

The selection of a proper lubricant depends upon many factors, including: heat, moisture, and pressure. If you need help selecting a lubricant for your specific application, feel free to talk to one of our technicians at 231-924-6160.



Thin Film Conveyor Lubricants

TYPE CNS

Available in:

5 Gallon Pails and 55 Gallon Drums

Base: Synthetic Ester

Temperature Range: Ambient up to 500°F

- *Non-Staining Lubricant*
- *Thin film, anti-wear penetrating lubricant*
- *Specially designed to lubricate and leave no residuals or carbons*

TYPE GPC

Available in:

5 Gallon Pails and 55 Gallon Drums

Base: Pure Synthetic Water Soluble Polymer with Oxirane

Temperature Range: Ambient up to 450°F

- *Compatible with most automotive paints and coatings*
- *Readily dissolves in water and water-based rinses and paints*
- *Inhibits rust, corrosion and oxidation*
- *Excellent thermal stability*
- *Contains no silicone and will not adversely affect paint finishes*
- *ISO Grade 22*
- *No Voc's*
- *Biodegradable*

NOTE

The selection of a proper lubricant depends upon many factors, including: heat, moisture, and pressure. If you need help selecting a lubricant for your specific application, feel free to talk to one of our technicians at 231-924-6160.



Higher Viscosity Conveyor Lubricants

TYPE GPC-220

Available in:

5 Gallon Pails and 55 Gallon Drums

Base: Pure Synthetic Water Soluble
Polymer with Oxirane

Temperature Range: Ambient up to 450°F

- *Compatible with most automotive paints and coatings*
- *Readily dissolves in water and water-based rinses and paints*
- *Inhibits rust, corrosion and oxidation*
- *Excellent thermal stability*
- *Contains no silicone and will not adversely affect paint finishes*
- *ISO Grade 220*
- *No Voc's*
- *Biodegradable*

TYPE CNS-Heavy

Available in:

5 Gallon Pails and 55 Gallon Drums

Base: Synthetic Ester

Temperature Range: Ambient up to 500°F

- *Non-Staining Lubricant*
- *Thin film, anti-wear penetrating lubricant*
- *Specially designed to lubricate and leave no residuals or carbons*
- *Water dispersion qualities make it ideal on wash lines and other locations where moisture can be a problem*

TYPE 38

Available in:

5 Gallon Pails and 55 Gallon Drums

Base: Pure Synthetic Polyol Ester

Temperature Range: -55°F~550°F

- *No Voc's*
- *High Temperature, Ashless, Synthetic Conveyor Lubricant*
- *Exceptional high temperature stability*
- *Clean, low volatility, optimum viscosity*

NOTE

The selection of a proper lubricant depends upon many factors, including: heat, moisture, and pressure. If you need help selecting a lubricant for your specific application, feel free to talk to one of our technicians at 231-924-6160.



Conveyor Greases

TYPE TRIBOSYN1

High Temp Grease

Available in: 14 oz. Tubes and 40 lb. Pails
(Larger sizes available upon request)

Base: Ester

Temperature Range: 300°F~565°F

- *Excellent mechanical stability with complete rust protection.*
- *Extreme Pressure (EP) properties*
- *Does not volatilize dry out, nor soften and run out of the bearing at elevated temperatures*

WearMaster KG 453

Available in: 14 oz. Tubes and 40 lb. Pails
(Larger sizes available upon request)

Base: Calcium Complex

Temperature Range: to 550°F

- *Specially designed for bearing in corrosive environments*
- *Good extreme pressure abilities*
- *Extremely stable and excellent resistance to water*

**Additional specialty grease options available.*

NOTE

The selection of a proper lubricant depends upon many factors, including: heat, moisture, and pressure. If you need help selecting a lubricant for your specific application, feel free to talk to one of our technicians at 231-924-6160.



I-Beam Conveyor Brush Cleaning Systems

I-Beam Conveyor Beam Sweep

- Cleans the web surfaces of the rail
- Reduces debris fall out and improves grounding contact
- Easily installed and removed



MODEL #3-91BC

For Three Inch
I-Beam Conveyor

REPLACEMENT BRUSHES
#B913BRTB Top/Bottom (4)
#B913BRS Sides (2)

MODEL #4-91BC

For Four Inch
I-Beam Conveyor

REPLACEMENT BRUSHES
#B914BRTB Top/Bottom (4)
#B914BRS Sides (2)

MODEL #6-91BC

For Six Inch
I-Beam Conveyor

REPLACEMENT BRUSHES
#916BRTB Top/Bottom (4)
#916BRS Sides (2)

Yoke Cleaning Brush

- Removes buildup from hard to reach, often overlooked sources of contamination
- Mounting block welds to the bottom of the rail
- Brush is easily replaced



MODEL #30Y

For Three Inch
I-Beam Conveyor

REPLACEMENT BRUSHES
#30RB (1) for #30Y

MODEL #40Y

For Four Inch
I-Beam Conveyor

REPLACEMENT BRUSHES
#40RB (1) for #40Y



Power and Non-Power Brush Cleaners

Non-Power Brush Cleaning System I-Beam Conveyor Chain Cleaner

- Cleans chain and trolleys
- Removes debris and reduces rejects without contaminating parts
- Adjusts to contact hard to reach points
- Spring loaded to prevent jamming if a hanger passes at an odd angle



MODEL #300-I

For Three Inch I-Beam Conveyor

MODEL #400-I

For Four Inch I-Beam Conveyor

MODEL #600-I

For Six Inch I-Beam Conveyor

REPLACEMENT BRUSHES

#75RB (20) for #300-I / #400-I / #600-I

** Standard assembly includes crimped carbon steel brushes. Assemblies with Carbide Impregnated Nylon brushes are also available.*

MODEL
#OP-08



Power Brush Cleaning System Conveyor Chain & Trolley Wheel Cleaner

- Cleans while conveyor is in operation.
- Removes dirt, rust, scale, and/or chemical residue
- Works for overhead, inverted and floor conveyors
- Brushes shaped for your conveyor, for efficient operation

MODEL #OP-08

REPLACEMENT BRUSHES AVAILABLE



Enclosed Track Conveyor Brush Cleaning Systems

MODEL #UN91



Enclosed Track Channel Sweeps

- Removes dirt and debris from the internal conveyor track surfaces to improve grounding and reduce rejects
- Easily installed by replacing a single chain link
- Replaceable brushes

MODEL #RW91



MODEL #UN91

For Unibilt and Rapid Conveyors

REPLACEMENT BRUSHES
#91302RB (4) for #UN91

MODEL #RW91

For Richards Wilcox Conveyors

REPLACEMENT BRUSHES
#91312RB (4) for #RW91

** Brass brushes are standard for assemblies and replacement brushes. Stainless Steel brush assemblies and replacement brushes are also available.*

MODEL #8074B



Enclosed Track Chain Cleaners

- Remove dirt and debris from enclosed track conveyor chains
- Units are pre-mounted on modified rail section

MODEL #8075B



MODEL #8074B

For Unibilt and Rapid Conveyors

REPLACEMENT BRUSHES
#50RB Sides (4) for #8074B / #8075B
#75RB Top (1) for #8074B / #8075B

MODEL #8075B

For Richards Wilcox Conveyors



Other Conveyor Brush Cleaning Systems



MODEL #800QCB

Overspray Eliminator Brush

- Mounts at the location of the lubricator
- Prevents contamination of parts by lubricant overspray
- Brushes are easily replaced

MODEL #800QCB

Parts Saver Brush

Available for most conveyor types

REPLACEMENT BRUSHES

#91006RB (2) for #800QCB



Next Generation Mighty Lube® Conveyor Monitoring System



When considering the Conveyor Monitoring System, think about the following questions:

minute of **downtime** cost?

2 If your conveyor chain needs to be **replaced**, what would the total cost be?

3 What are the costs involved in **diagnosing and repairing** the problem with a line?

With the MIGHTY LUBE® CONVEYOR MONITORING SYSTEM, your mind will be at ease. All vital conveyor parameters are monitored. When any condition exceeds limits, you will be **promptly alerted**, both on screen and by email.

With the MIGHTY LUBE® CONVEYOR MONITORING SYSTEM, problems are reported before they occur, allowing routine maintenance to take the place of production time repair.



Extend Equipment Life

For Example, a 2000 foot chain costs approximately \$50,000 with an average life of five years. If you are able to extend the life of the chain by only a year, the savings would be \$10,000.

A facility with ten conveyors of this size could realize a savings of over \$100,000 from wear costs alone!

Lower Power Consumption

Finding the best balance of lubrication and air pressure while monitoring the power consumption, substantial energy savings can be achieved.

If the electrical cost of operating your conveyors is \$5,000 per month, and the average amperage draw is 5 amps, reducing the amount by only one amp would result in yearly savings of \$12,000.

Pinpoint Wear Before Chain Failure

The conveyor chain does not wear evenly throughout the length of the chain.

Normally, sections of the chain are removed at random. The sections removed may be in excellent condition while other lengths of chain are near its wear limits.

By **knowing the exact location** of the greatest wear, the section most likely to fail unexpectedly can be removed down to the individual link.

This could as much as double the life of the chain, saving thousands per year!

Avoiding catastrophic failure and disastrous production downtime, which costs \$5,000, \$10,000 or more per minute, is always the goal of any good maintenance program.



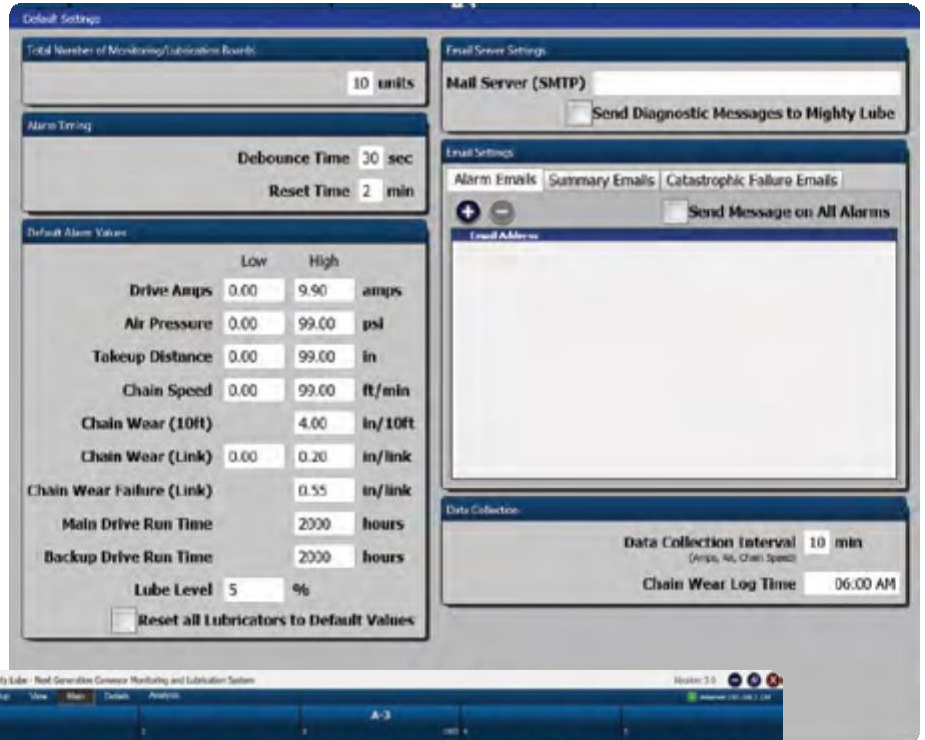
Next Generation Mighty Lube® Conveyor Monitoring System

Monitors conveyor chain wear-link by link and 10ft data

Provides chain wear average and chain life projection

Monitors drive amps, air take-up and counterweight take-up distance

Monitors chain speed and drive hours



Industry leader in preventative and predictive conveyor care.



Next Generation Mighty Lube® Conveyor Monitoring System

Next Generation MIGHTYLUBE® MONITORING SYSTEM adds:

Detailed lubrication reports and settings changes*

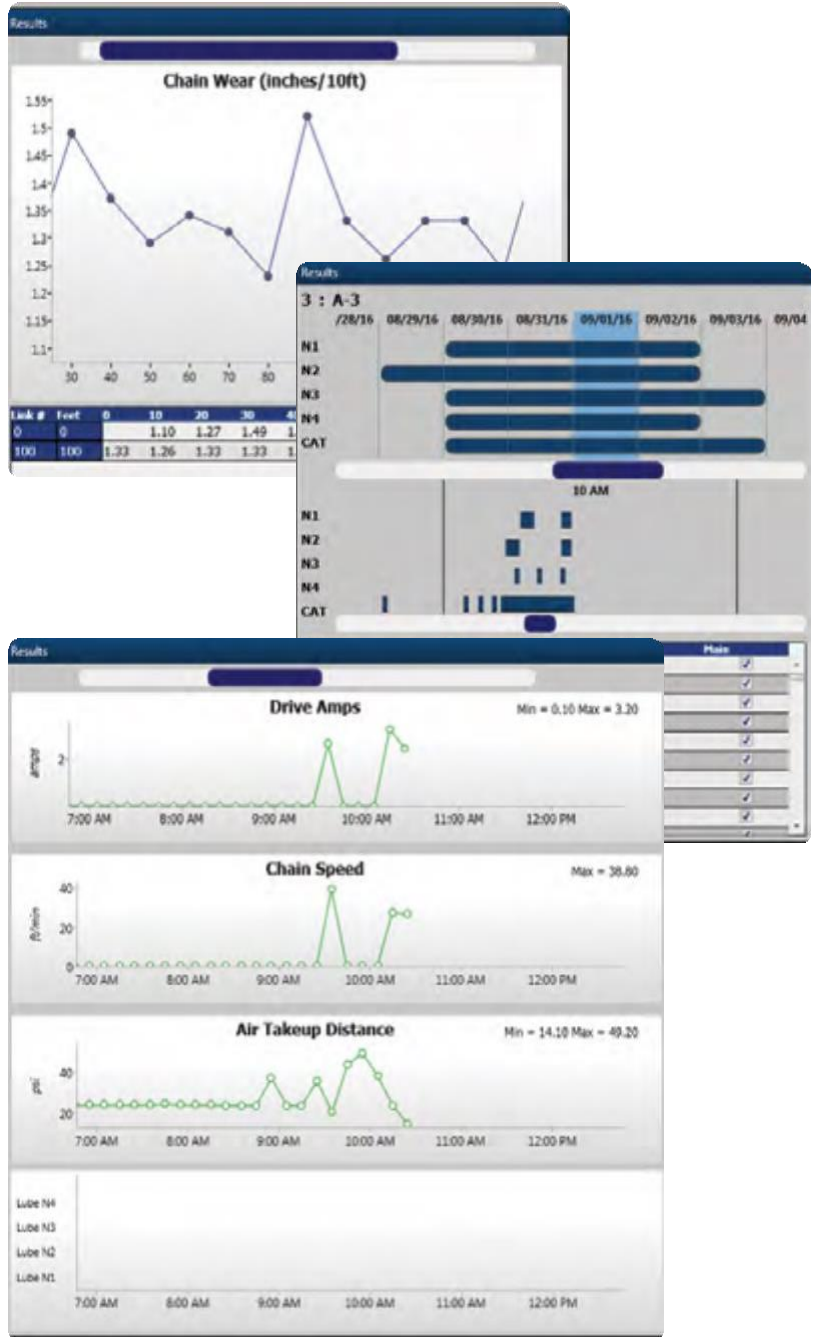
New and improved analytical data

Dog pitch spacing monitoring

Several new color conditions

Supports up to Windows 10 PC

**Lubrication reports and settings only available in Permanent Monitor PLUS Lubrication models.*



Full-Color, Printable Charts and Graphs



Multi Line (Permanent) Mighty Lube® Monitoring System

Monitors Conveyor Chain Wear - Link by Link

Optimal Monitoring
Solution for
Conveyor Systems

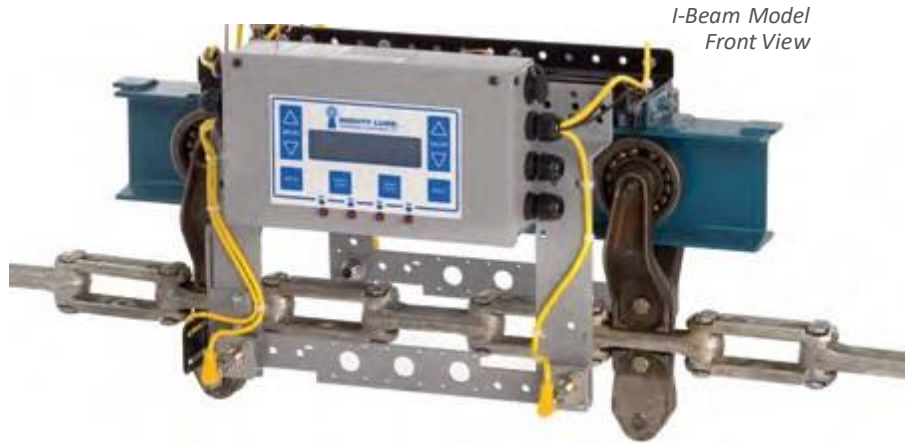
New analytical data screens,
such as long term chain wear average

Monitor up to 100 conveyors
with one expandable system

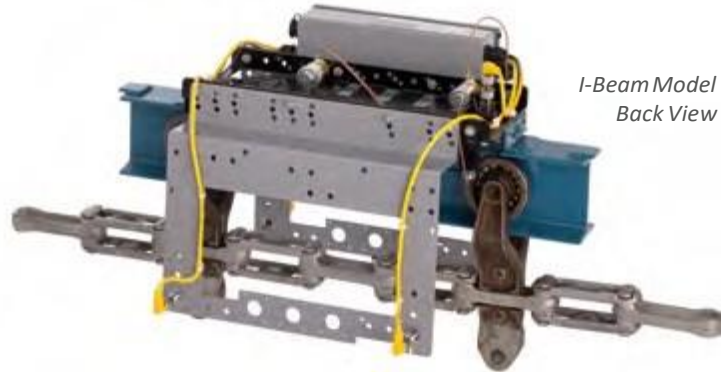
Utilizes the latest patented technology

View data from any PC
connected to your network

Optional paint marker allows for
automatic marking of worn or questionab



*I-Beam Model
Front View*



*I-Beam Model
Back View*

PERMANENT SYSTEM MODELS

Enclosed Track

MODEL #9101M

Monitor for Unibilt/Rapid
Enclosed Overhead Conveyors



*Enclosed Track Model
Front View*

I-Beam

MODEL #9103M

Monitor for 3" Overhead
Monorail x348 Conveyors

MODEL #9104-4M

Monitor for 4" Overhead
Monorail x458 Conveyors

MODEL #9104-6M

Monitor for 4" Overhead
Monorail x678 Conveyors

Additional models available for Inverted and Specialty Conveyors.



Multi Line (Permanent) ALL IN ONE Monitoring + Lubrication

Experience the **maximum potential** of the Mighty Lube® Next Generation Conveyor Monitoring System with the ALL IN ONE conveyor monitoring PLUS lubrication system. This state-of-the-art system allows for additional monitoring capabilities as well as changes to lubrication settings from the monitoring system software.

Detailed lubrication reports including:

- Lube Head Voltage
- Pump Status
- Lubrication Levels
- Cycle Data
- Time Stamped Lubrication Cycles & Changes
- Control / Monitor
- External Lubrication Devices



ALL IN ONE SYSTEM MODELS

Enclosed Track

MODEL #9100ML

Monitor PLUS Lubricator for Richards Wilcox Enclosed Overhead Conveyors

MODEL #9101ML

Monitor PLUS Lubricator for Unibilt/Rapid Enclosed Overhead Conveyors

I-Beam

MODEL #9103ML

Monitor PLUS Lubricator for 3" Overhead Monorail x348 Conveyors

MODEL #9104-4ML

Monitor PLUS Lubricator for 4" Overhead Monorail x458 Conveyors

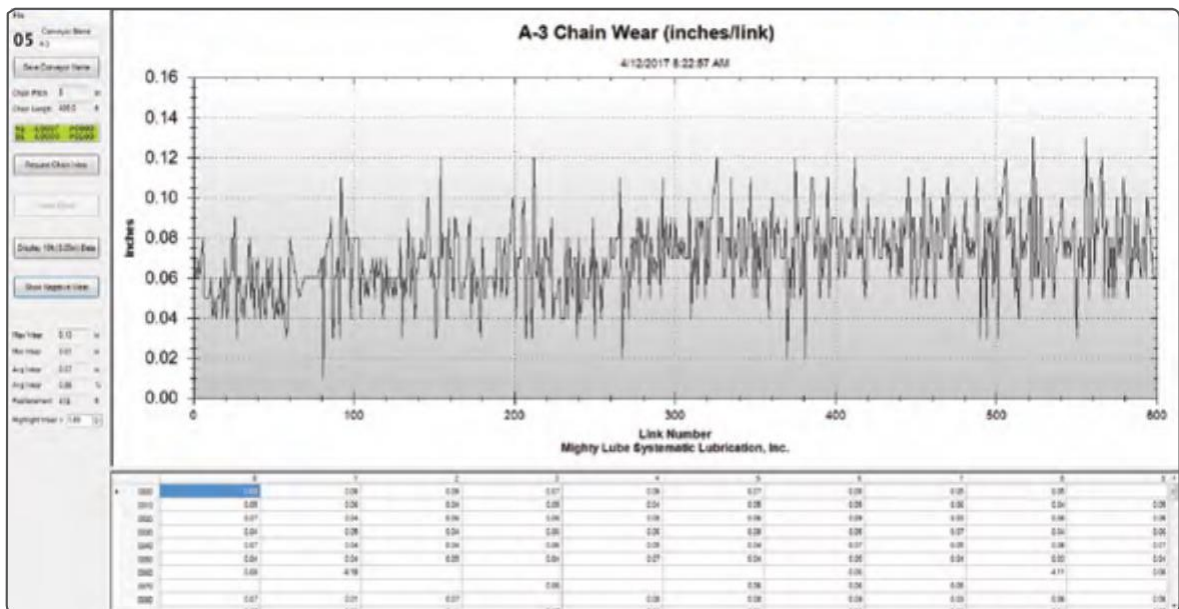
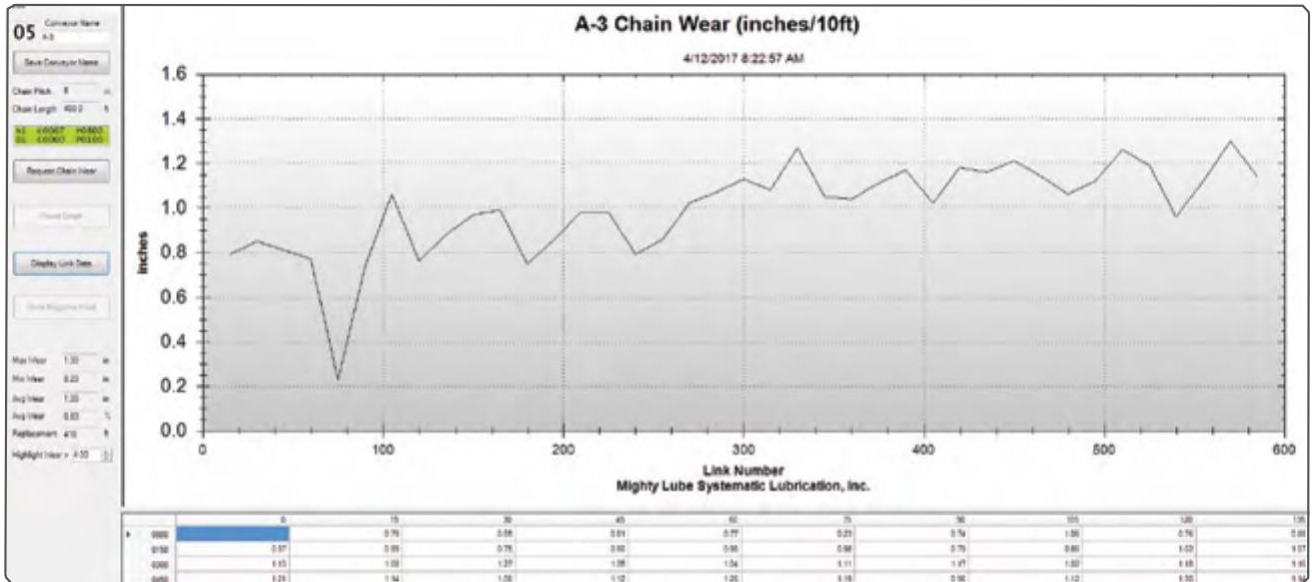
MODEL #9104-6ML

Monitor PLUS Lubricator for 4" Overhead Monorail x678 Conveyors

Additional models available for Inverted and Specialty Conveyors.



Portable (Multi-Line) Mighty Lube® Monitoring System



Software License and
Mighty Lube® Program Included.



Portable (Multi-Line) Mighty Lube® Monitoring System

Monitors Conveyor Chain Wear - *Link by Link*

Portable so it can be used on multiple conveyors in a facility

Battery powered for ease of use

Direction of travel detection

Easy installation and setup

Includes Windows based tablet with USB connection

Utilizes the latest patented technology

Optional paint marker allows for automatic marking of worn or questionable links

Option of metric or standard measurements provided



Front View



Back View

PORTABLE SYSTEM MODELS

I-Beam

MODEL #6103-3/4M

Monitor for 3" Overhead
Monorail x348/x458 Conveyors

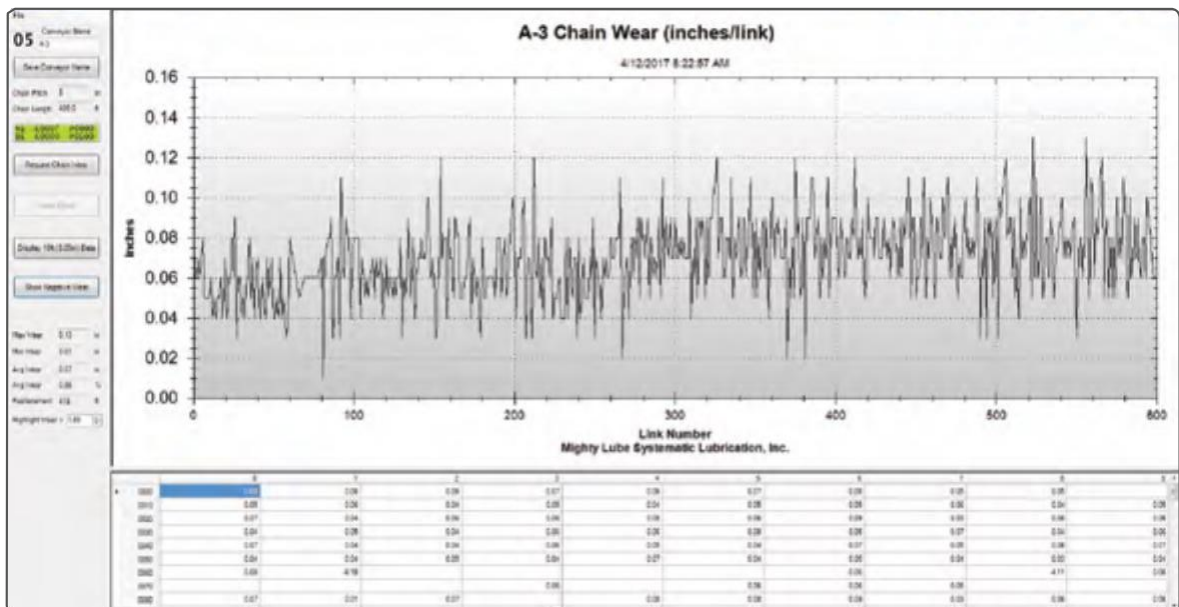
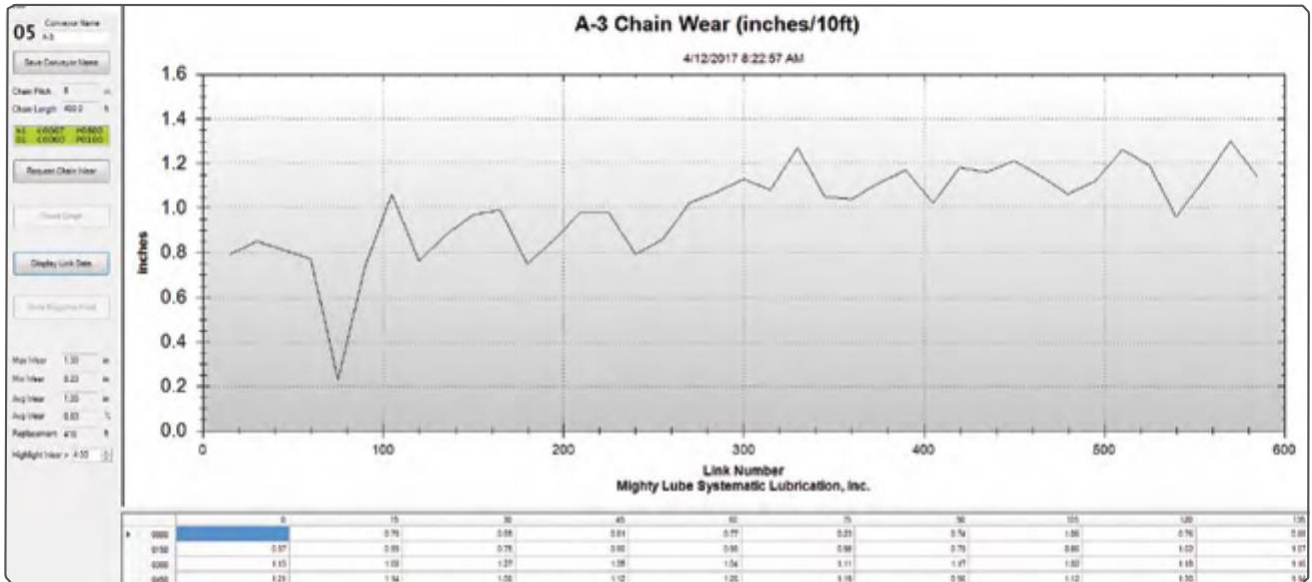
MODEL #6104-4/6M

Monitor for 4" Overhead
Monorail x458/x678 Conveyors

Additional models available for Inverted and Specialty Conveyors.



Single Line (Stationary) Mighty Lube® Monitoring System



Software License and
Mighty Lube® Program Included.



Single Line (Stationary) Mighty Lube® Monitoring System

Monitors Conveyor Chain Wear - Link by Link

Single Line System -
Monitor the critical lines individual

Utilizes the latest patented technology

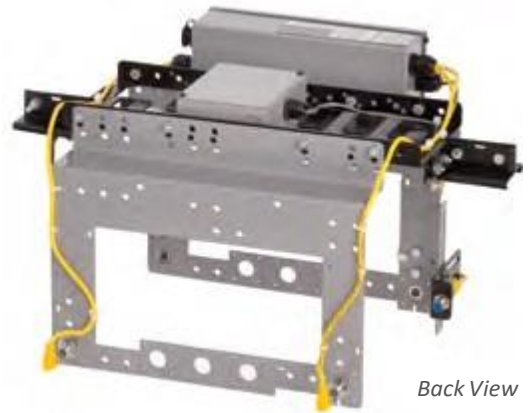
Includes Windows based tablet
with USB connection

Single use license and
Mighty Lube® program included

Option of metric or standard measurements provided



Front View



Back View

SINGLE LINE SYSTEM MODELS

Enclosed Track

MODEL #5701M

Monitor for Unibilt/Rapid
Enclosed Overhead Conveyors

I-Beam

MODEL #5703-3M

Monitor for 3" Overhead
Monorail x348 Conveyors

MODEL #5704-4M

Monitor for 4" Overhead
Monorail x458 Conveyors

MODEL #5706-6M

Monitor for 6" Overhead
Monorail x678 Conveyors

MODEL #5703-4M

Monitor for 3" Overhead
Monorail x458 Conveyors

MODEL #5704-6M

Monitor for 4" Overhead
Monorail x678 Conveyors

Additional models available for Inverted and Specialty Conveyors.



Paint Marker for Monitoring System (Optional)



Allows for automatic marking of worn links or areas that exceed company set parameters

- Compatible with all Mighty Lube® Conveyor Monitoring Systems
- Portable – can be moved from one conveyor to another
- Power and control provided from monitoring head unit
- Utilizes standard aerosol paint can (not included)
- Includes 8-ft. control cable
- Available for inverted and overhead conveyors